

Picture Retake Day is Coming

Monday, November 18, 2019
Lunes, 18 de noviembre, 2019
Salish Coast Elementary School

You can still order on mylifetouch.com
with your Picture Day ID:

LS219145Q1

*Ya llega el día de la nueva toma fotográfica
Aún puedes encargar en mylifetouch.com con tu ID del Día de la Foto.*



Want us to retake your picture?

Simply return your original package on
Picture Retake Day.

*¿Deseas que volvamos a tomar tu foto? Simplemente envía tu paquete original
el día de la nueva toma fotográfica.*

LS219145Q1

73502

© 2019 Lifetouch National School Studios Inc.

Lifetouch.

Salish Coast
Behavior Flow
Chart

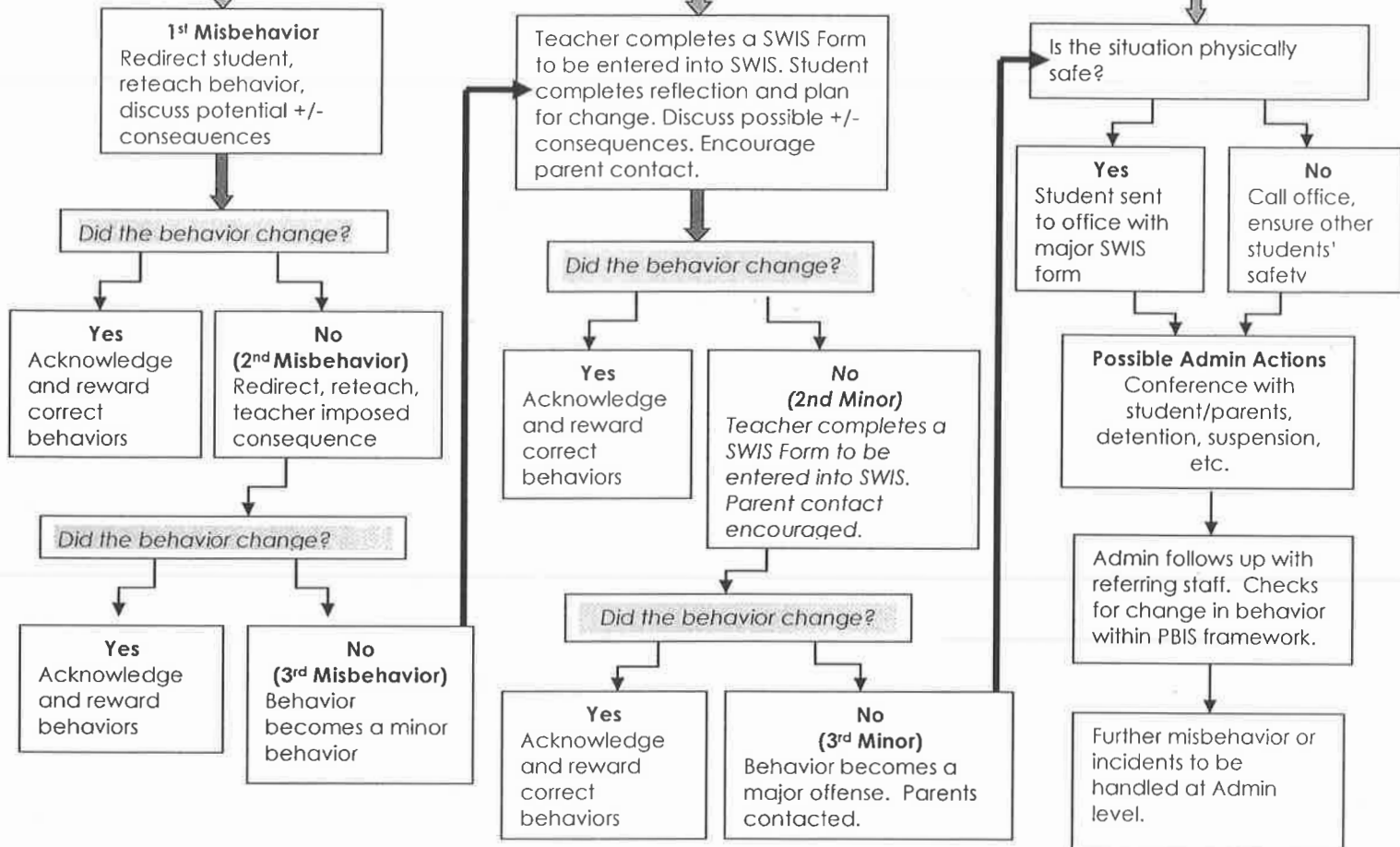
Identify Problem
Behavior



Slip Up

Minor

Major



Teacher/Staff Managed Problem Behaviors

Office Managed Problem Behaviors

Inappropriate language <i>Name calling</i>	Abusive language <i>Racial taunting</i>
Physical contact (reaction) <i>Wrestling w/another student -pushing/shoving/kicking biting (w/no marks)</i>	Fighting/physical aggression (intent) <i>kicking, hitting, pushing, shoving, biting, etc. w/intent to do harm</i>
Disrespect <i>Talking back</i>	Leaving school grounds w/o permission
Defiance <i>Not completing class work Not following directions/non-compliance</i>	Threat or intimidation/Bullying <i>Verbal threats of aggression against another person</i>
Observable behavior <i>poor line behavior running in the hallway throwing food</i>	Weapons/Dangerous Items <i>Knives, bullets, lighters, matches, etc.</i>
Property misuse <i>snooping in other's desks/bags</i>	Lying/Cheating <i>Forgery Plagiarism</i>
Dress code violation <i>Inappropriate language on clothing</i>	Harassment <i>blatant</i>
Stealing <i>petty theft/little or no value</i>	Theft <i>major theft of items of high value</i>



**YOU'RE
INVITED!**

**PORT TOWNSEND
PARK AND
RECREATION
SYSTEM
WORKSHOP**

Today's Vision
Tomorrow's Parks

PARKS, RECREATION, AND OPEN SPACE (PROS) PLAN

PROS PLAN

WHERE: The Cotton Building, 607 Water Street

WHEN: November 26 from 5-7pm

ACTIVITIES TO BEGIN AT 5:15

WE ARE HOSTING THE SECOND IN OUR SERIES OF PLAN WORKSHOPS. WE HOPE TO HEAR FROM YOU AGAIN!

Port Townsend is developing an update to its 2014 Parks, Recreation and Open Space (PROS) Plan! Our new 2020 plan will be based on an extensive public outreach process. This second workshop will focus on:

- Survey results
- Park and facility analysis
- Priorities and Themes (activities based)
 - Finalize guiding principles for the PROS plan
 - Define gaps in our parks and recreation services
 - Design a park!
 - Investigate funding opportunities to implement the PROS plan

Questions?

Contact: Alex Wisniewski | Director

tel. 360.344.3064

AWisniewski@cityofpt.us

City of Port
Townsend

PARKS, RECREATION &
COMMUNITY SERVICES

<https://cityofpt.us/parksrec>

Come Learn to Swim at MVP!



Lessons are Monday, Wednesday and Friday

- **Levels 1&3 are November 18th- 27th at 3:30 PM**
- **Levels 2&4 are November 18th -27th at 4:00 PM**

Only \$50 per session. Register Today!

This activity is NOT sponsored by the school district and the district assumes no responsibility for the conduct of or the safety of this event/activity.

MVP
Mountain View Pool
City of Port Townsend

1925 Blaine Street (360) 385-7665 www.cityofpt.us/pool



EVENING OPEN SWIM

Join us starting November 18th for evening Open Swim at MVP, Monday – Friday from 6:30 to 7:30!

We will have available:

- **2 Lap Lanes (be prepared to circle swim)**
- **The Entire Shallow End**
- **All Equipment/Toys on Deck**

MVP
Mountain View Pool
City of Port Townsend

cityofpt.us/pool

(360) 385-7665

mvp@cityofpt.us